

OPTIONAL PORCH
489 SQ. FT. W/ PORCH

Silvercrest CHAMPION
MANUFACTURED BEAUTIFULLY
299 N. Smith Ave., Corona CA 92880

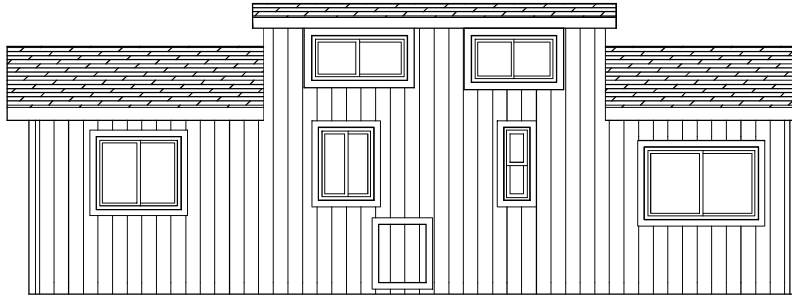
PROPRIETARY AND CONFIDENTIAL
THESE DRAWINGS AND SPECIFICATIONS ARE ORIGINAL
PROPRIETARY AND CONFIDENTIAL MATERIALS OF
CHAMPION HOME BUILDERS INC.
COPYRIGHT © 1976-2016 BY CHAMPION

APPROVER'S SEAL

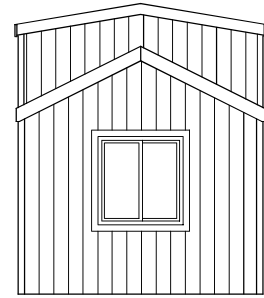
MODIFICATIONS
1A-SEE REV LOG
2-SEE REV LOG
TITO 7-24-12
SR 1-4-16

MODEL: **SL-04**
35/11-2-1BR
TITLE: **LITERATURE PLAN**
LOFT
DATE: 11-16-11 SCALE: 1/8" = 1'-0" FILENAME: SL-04-LT101
DRAWN BY: BMS CHECKED BY:

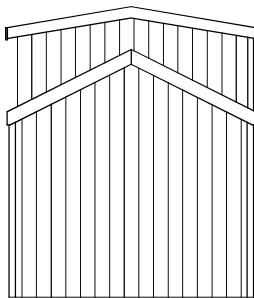
SHEET NO.:
LT-101
PAGE:
1 OF 1



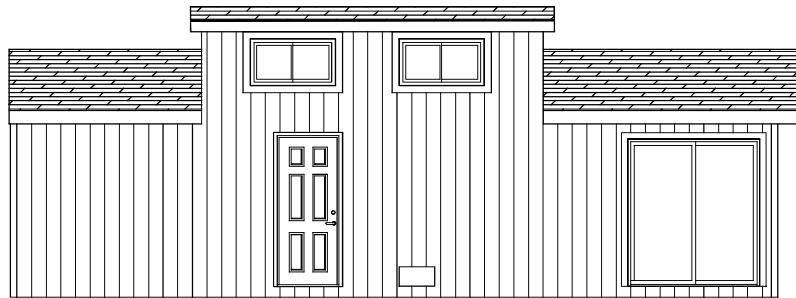
LEFT




FRONT

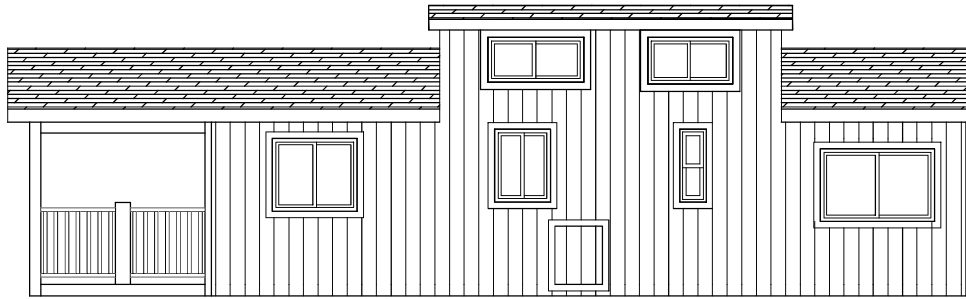


REAR

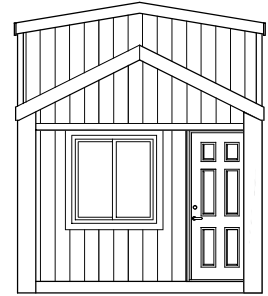


RIGHT

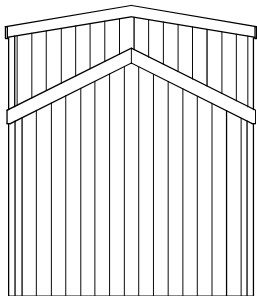
 <p>299 N. Smith Ave., Corona CA 92880</p>	<p>APPROVER'S SEAL</p>	<p>MODIFICATIONS</p> <p>2-SEE REV LOG SR 1-4-16</p>	<p>MODEL: SL-04 35/11-2-1BR</p> <p>TITLE: ELEVATION -STD LOFT NO PORCH</p> <p>DATE: 11-16-11 SCALE: 1/8" = 1'-0" FILENAME: SL-04-LT101</p> <p>DRAWN BY: BMS CHECKED BY:</p>	<p>SHEET NO.: AE-101</p> <p>PAGE: 1 OF 1</p>
<p>PROPRIETARY AND CONFIDENTIAL THESE DRAWINGS AND SPECIFICATIONS ARE ORIGINAL PROPRIETARY AND CONFIDENTIAL MATERIALS OF CHAMPION HOME BUILDERS INC. COPYRIGHT © 1976-2016 BY CHAMPION</p>				



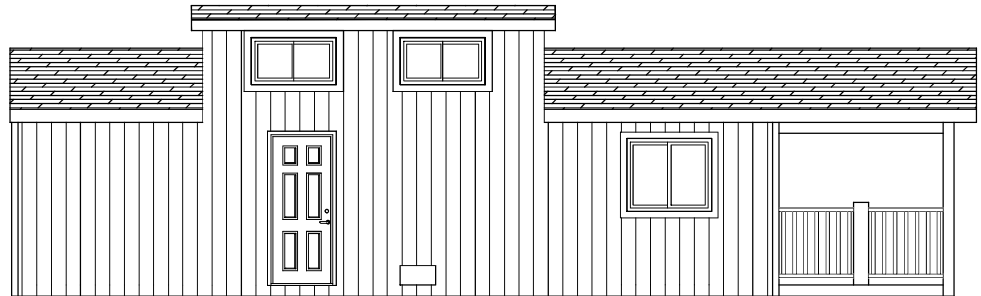
LEFT



FRONT



REAR



RIGHT

Silvercrest CHAMPION
 MANUFACTURED BEAUTIFULLY
 299 N. Smith Ave., Corona CA 92880

APPROVER'S SEAL

MODIFICATIONS

MODEL:

SL-04
 35/11-2-1BR

SHEET NO.:

TITLE: **ELEVATION -OPT PORCH**
 LOFT WITH PORCH

AE-102

DATE: 11-16-11

SCALE: 1/8" = 1'-0"

FILENAME:

PAGE:

DRAWN BY: BMS

CHECKED BY:

SL-04-LT101

1 OF 1

PROPRIETARY AND CONFIDENTIAL
 THESE DRAWINGS AND SPECIFICATIONS ARE ORIGINAL
 PROPRIETARY AND CONFIDENTIAL MATERIALS OF
 CHAMPION HOME BUILDERS INC.
 COPYRIGHT © 1976-2016 BY CHAMPION